



## APARTMENT 508

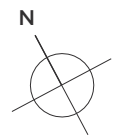
### Residential Apartments

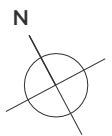
Level 5 – 3 Bedroom

Internal area 97m<sup>2</sup>

External area 17m<sup>2</sup>

Colliers International does not guarantee, warrant or represent that the information contained in this advertising and marketing document is correct. Any interested parties should make their own enquiries as to the accuracy of the information. We exclude all inferred or implied terms, conditions and warranties arising out of this document and any liability for loss or damage arising there from.





# SOUTHBANK

WOLLI CREEK



## APARTMENT 608

Residential Apartments

Level 6 – 3 Bedroom

Internal area 97m<sup>2</sup>

External area 17m<sup>2</sup>

Colliers International does not guarantee, warrant or represent that the information contained in this advertising and marketing document is correct. Any interested parties should make their own enquiries as to the accuracy of the information. We exclude all inferred or implied terms, conditions and warranties arising out of this document and any liability for loss or damage arising there from.

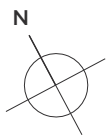




## APARTMENT 708

Residential Apartments

Level 7 – 3 Bedroom  
 Internal area 97m<sup>2</sup>  
 External area 17m<sup>2</sup>



Colliers International does not guarantee, warrant or represent that the information contained in this advertising and marketing document is correct. Any interested parties should make their own enquiries as to the accuracy of the information. We exclude all inferred or implied terms, conditions and warranties arising out of this document and any liability for loss or damage arising there from.





## APARTMENT 808

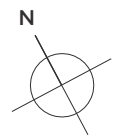
Residential Apartments

Level 8 – 3 Bedroom

Internal area 97m<sup>2</sup>

External area 17m<sup>2</sup>

Colliers International does not guarantee, warrant or represent that the information contained in this advertising and marketing document is correct. Any interested parties should make their own enquiries as to the accuracy of the information. We exclude all inferred or implied terms, conditions and warranties arising out of this document and any liability for loss or damage arising there from.





## APARTMENT 908

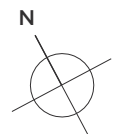
Residential Apartments

Level 9 – 3 Bedroom

Internal area 97m<sup>2</sup>

External area 17m<sup>2</sup>

Colliers International does not guarantee, warrant or represent that the information contained in this advertising and marketing document is correct. Any interested parties should make their own enquiries as to the accuracy of the information. We exclude all inferred or implied terms, conditions and warranties arising out of this document and any liability for loss or damage arising there from.



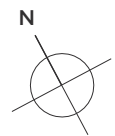


## APARTMENT 1008

Residential Apartments

Level 10 – 3 Bedroom  
 Internal area 97m<sup>2</sup>  
 External area 17m<sup>2</sup>

Colliers International does not guarantee, warrant or represent that the information contained in this advertising and marketing document is correct. Any interested parties should make their own enquiries as to the accuracy of the information. We exclude all inferred or implied terms, conditions and warranties arising out of this document and any liability for loss or damage arising there from.





## APARTMENT 1108

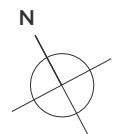
Residential Apartments

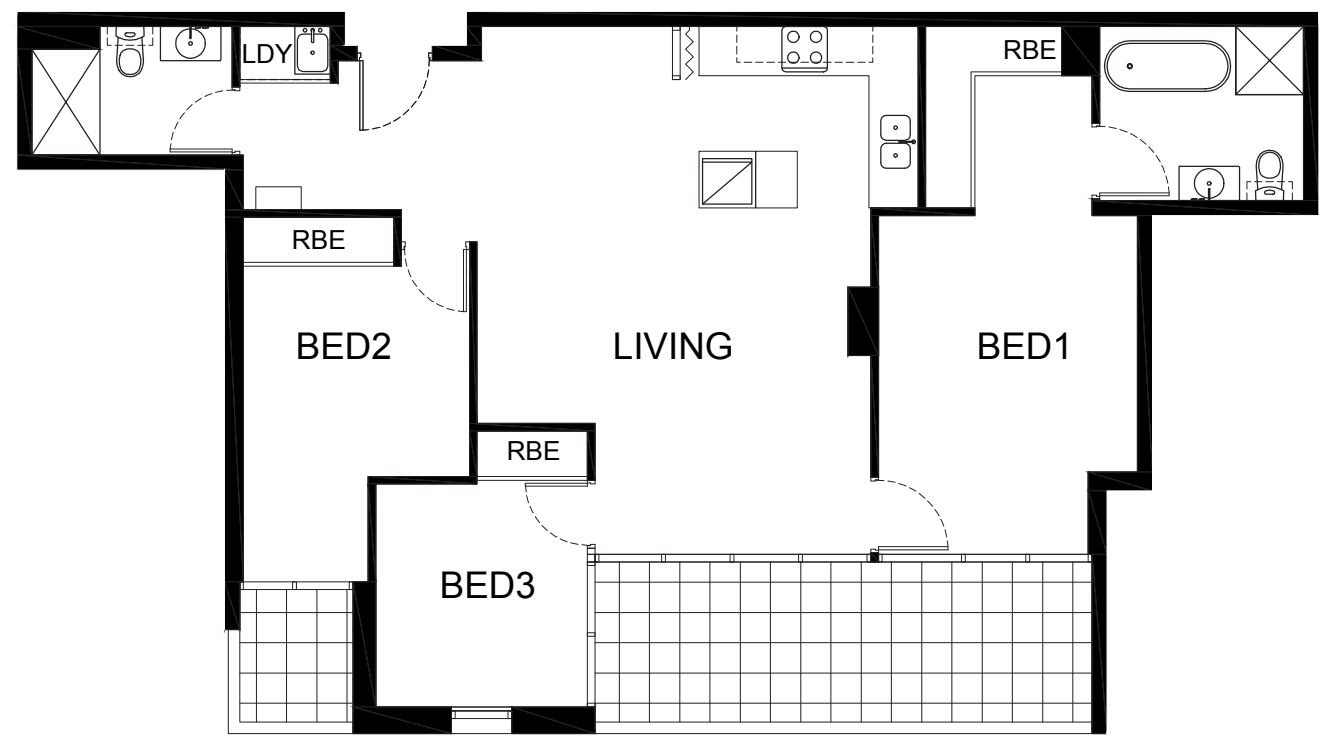
Level 11 – 3 Bedroom

Internal area 97m<sup>2</sup>

External area 17m<sup>2</sup>

Colliers International does not guarantee, warrant or represent that the information contained in this advertising and marketing document is correct. Any interested parties should make their own enquiries as to the accuracy of the information. We exclude all inferred or implied terms, conditions and warranties arising out of this document and any liability for loss or damage arising there from.

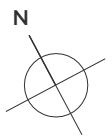




## APARTMENT 1208

### Residential Apartments

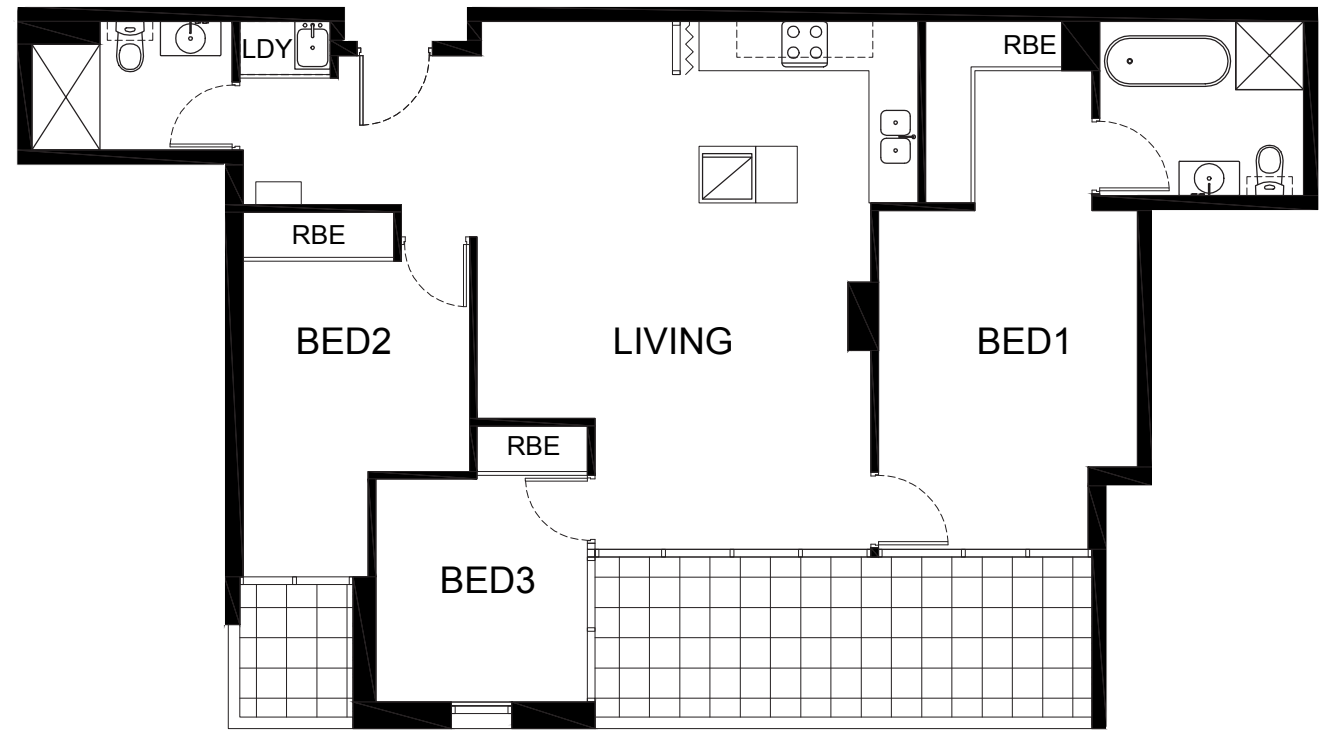
Level 12 – 3 Bedroom  
 Internal area 97m<sup>2</sup>  
 External area 17m<sup>2</sup>



Colliers International does not guarantee, warrant or represent that the information contained in this advertising and marketing document is correct. Any interested parties should make their own enquiries as to the accuracy of the information. We exclude all inferred or implied terms, conditions and warranties arising out of this document and any liability for loss or damage arising there from.





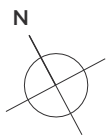


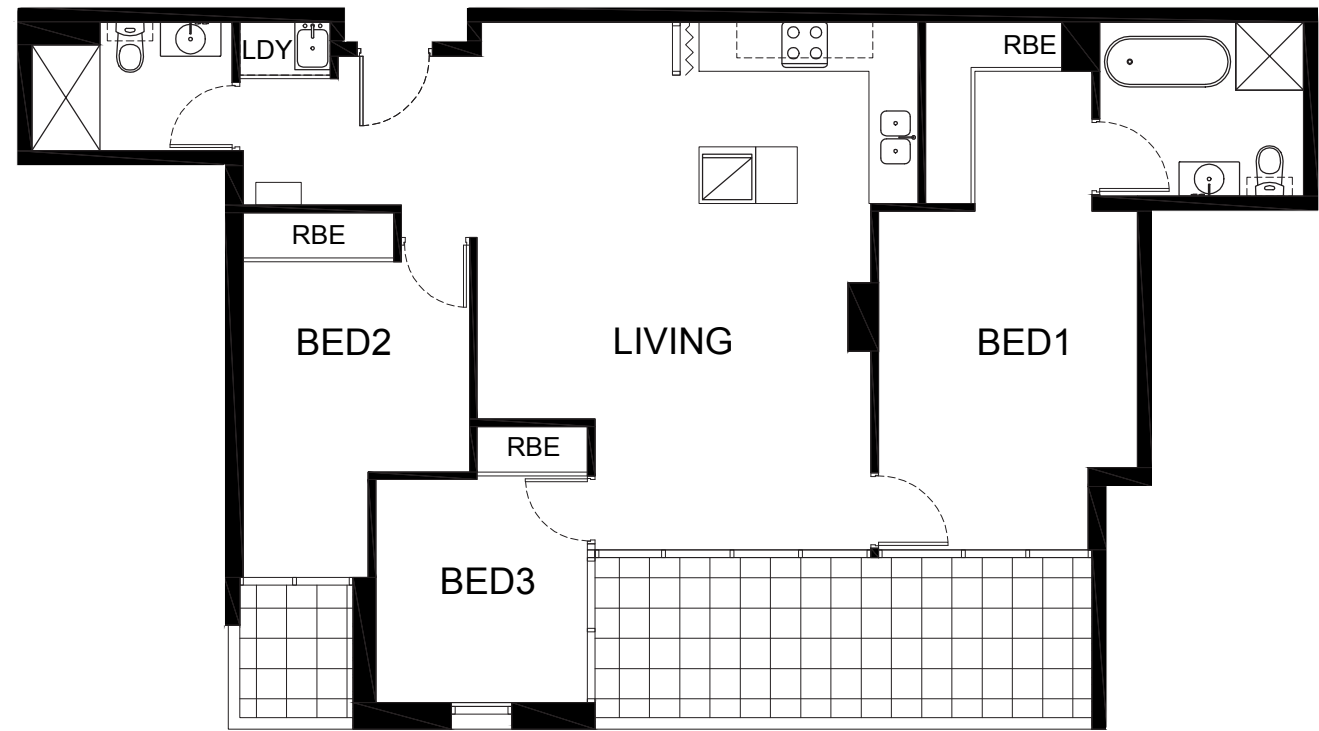
## APARTMENT 1308

### Residential Apartments

Level 13 – 3 Bedroom  
 Internal area 97m<sup>2</sup>  
 External area 17m<sup>2</sup>

Colliers International does not guarantee, warrant or represent that the information contained in this advertising and marketing document is correct. Any interested parties should make their own enquiries as to the accuracy of the information. We exclude all inferred or implied terms, conditions and warranties arising out of this document and any liability for loss or damage arising there from.





## APARTMENT 1408

Residential Apartments

Level 14 – 3 Bedroom  
Internal area 97m<sup>2</sup>  
External area 17m<sup>2</sup>

Colliers International does not guarantee, warrant or represent that the information contained in this advertising and marketing document is correct. Any interested parties should make their own enquiries as to the accuracy of the information. We exclude all inferred or implied terms, conditions and warranties arising out of this document and any liability for loss or damage arising there from.

